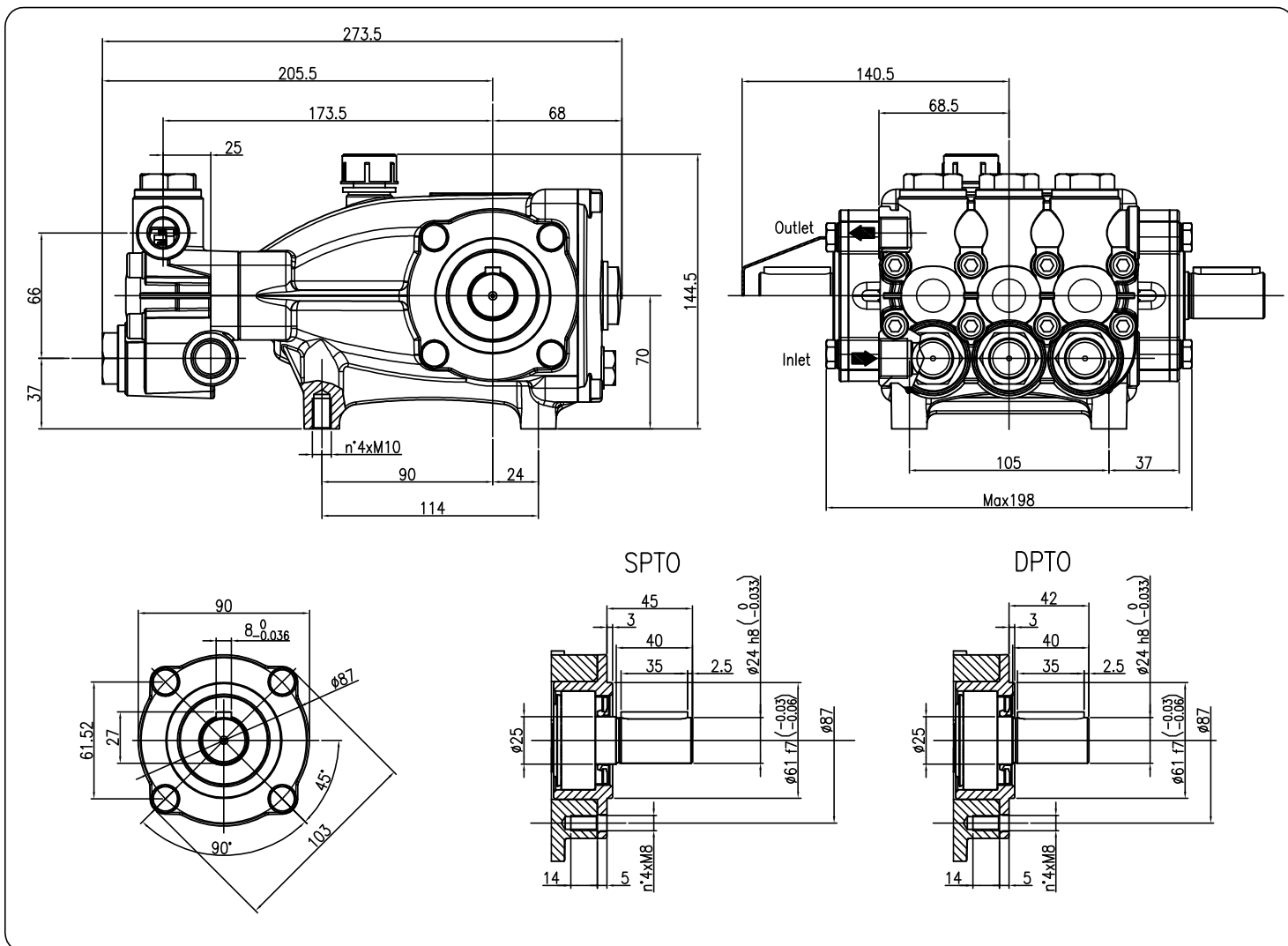


Pump Pompe Pumpen Pompa	Pressure Pression Druck Pressione		Volume Débit Leistung Portata		RPM tours/min u.p.m. giri/min	Required HP Puissance HP Leistung HP Potenza HP	Inlet port Entrée Eingang Aspirazione	Outlet Sortie Ausgang Mandata	Weight Kg Poids Kg Gewicht Kg Peso Kg
	bar	PSI	l/min	GPM					
NMT1220S	200	3000	12.5		1000	6.4	G 1/2	G 3/8	9.5
				4.0	1200	7.7			
NMT1520S	200	3000	15.0		1000	7.7	G 1/2	G 3/8	9.5
				4.7	1200	9.2			
NMT1220	200	3000	12.5		1450	6.4	G 1/2	G 3/8	9.5
				4.0	1740	7.7			
NMT1520	200	3000	15.0		1450	7.7	G 1/2	G 3/8	9.5
				4.7	1740	9.2			
NMT1820	200	3000	18.0		1450	9.2	G 1/2	G 3/8	9.5
				5.6	1740	11.0			
NMT2120	200	3000	21.0		1450	10.7	G 1/2	G 3/8	9.5
				6.6	1740	12.8			

Dimensioni d' ingombro

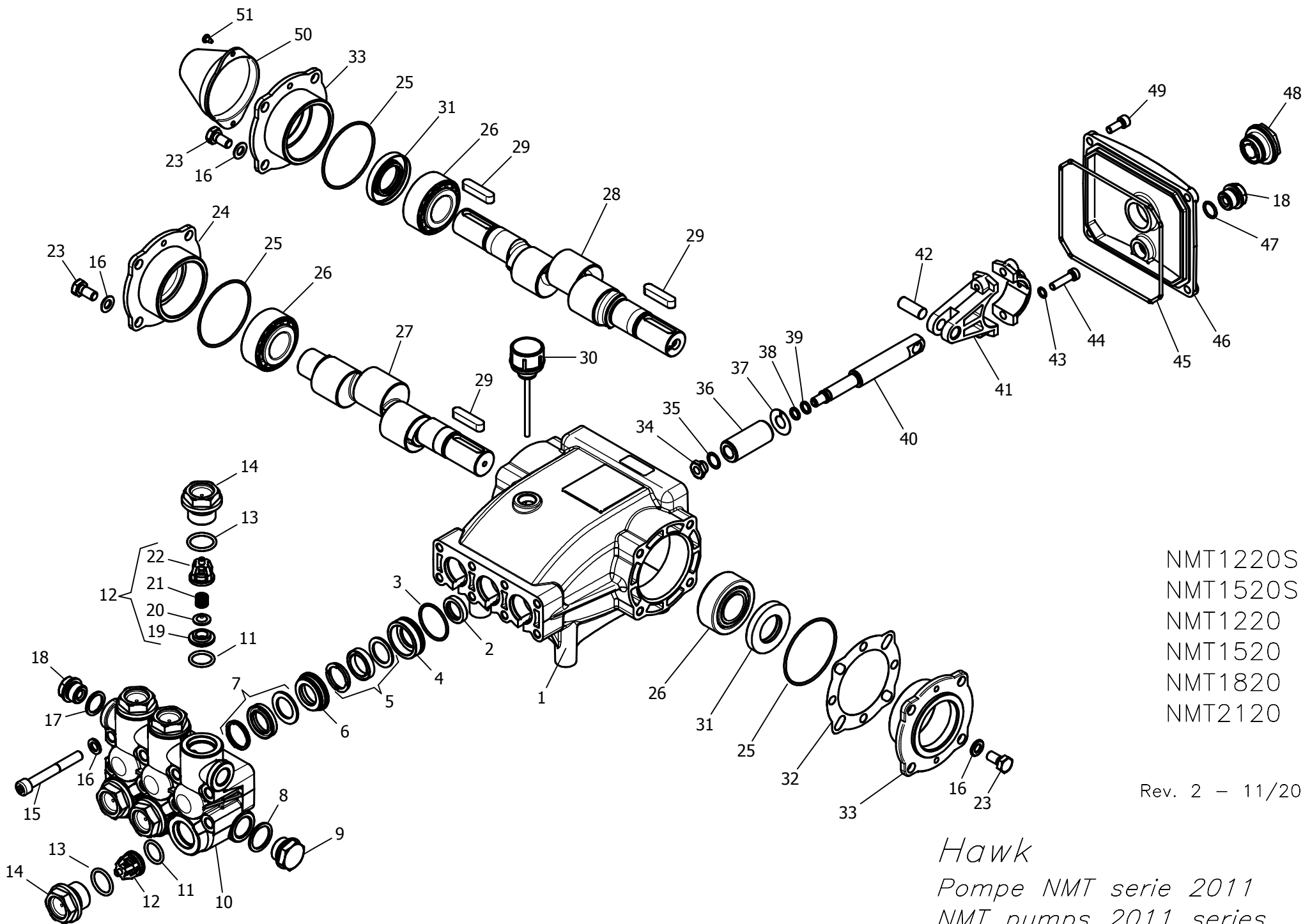
Overall dimensions



Lubrificazione: Olio SAE 20/40W  
Capacità 0.7 litri

Rev. 2 - 11/2015

Lubrication: SAE 20/40W Oil  
Capacity 0.7 liters



NMT1220S  
 NMT1520S  
 NMT1220  
 NMT1520  
 NMT1820  
 NMT2120

Rev. 2 - 11/2015

*Hawk*  
*Pompe NMT serie 2011*  
*NMT pumps 2011 series*

Posizioni Item	Part Number and Description	Codice e descrizione	Q.tà per ogni Pompa Q.ty for each Pump	NMT1220SRL	NMT1520SRL	NMT1220RL	NMT1520	NMT1520RL	NMT1820RL	NMT2120	NMT2120RL
3x (3- 5- 7)	2600.77 Plunger Seals 20 mm	2600.77 Guarnizioni pistone Ø20	1								
3- 4- 5- 6- 7	2600.78 Complete Seals Packing 20 mm	2600.78 Pacco completo Guarnizioni pistone Ø20	3								
34- 35- 36- 37 38- 39	2601.07 Plunger 20 mm	2601.07 Pistone Ø20	3								
11- 12- 13	2600.08 Complete Valve	2600.08 Valvola completa	6	◆	◆	◆	◆	◆	◆	◆	◆
3x ( 2 )	2608.03 Plunger oil Seals	2608.03 Anelli tenuta olio Asta	1								
3- 4- 5- 6- 7- 8 9- 10- 11- 12 13- 14 17- 18	2600.69 Complete Manifold	2600.69 Testata Completa	1								
40- 41- 42- 43 44	3100.13 Connecting Rod-Plunger Rod Assy	3100.13 Premontato Biella-Asta pistone	3								

## PARTS LIST

## LISTA PARTI

Pos. Item	Codice Part Number	Description	Descrizione	Q.tà per ogni Pompa Q.ty for each Pump	NMT1220SRL	NMT1520SRL	NMT1220RL	NMT1520	NMT1520RL	NMT1820RL	NMT2120	NMT2120RL
1	0202.95	Crankcase	Carter	1								
*2	0001.03	Plunger oil seal	Anello radiale	3								
*3	0601.07	"O" Ring Ø1.78x31.47	"O" Ring Ø1.78x31.47	3								
*4	1201.37	Pressure ring 20mm	Pressore "U" Ø20	3								
*5	0002.52	Low pressure "U" seal, dia.20mm	Anello tenuta "U" Ø20	3								
*6	0300.60	Intermed. ring 20mm	Diffusore Interm. Ø20	3								
*7	0002.60	High pressure "U" seal, dia.20mm	Anello tenuta "U" Ø20	3								
*8	0603.07	Copper washer G1/2	Guarnizione rame	1								
*9	1601.20	Brass plug G1/2	Tappo G1/2	1								
*10	1602.34	Manifold housing	Testata	1								
*11	0601.19	"O" Ring Ø2.62x17.13	"O" Ring Ø2.62x17.13	6								
*12	3604.70	Valve assembly	Valvola premontata	6	◆	◆	◆	◆	◆	◆	◆	◆
*13	0601.65	"O" Ring Ø2.62x20.29	"O" Ring Ø2.62x20.29	6								
*14	1601.30	Valve plug	Tappo valvola	6								
15	1801.03	Manifold stud bolt M8x65 Dacromet	Vite M8x65 Dacromet	8								
16	1400.01	Washer Ø8,5	Rosetta Ø8.5	16								
*17	0603.06	Copper washer G3/8	Guarnizione rame	1								
*18	1601.17	Brass plug G3/8	Tappo G3/8	2								
19	1503.18	Valve seat	Sede valvola	6								
20	1202.00	Valve plate	Piattello valvola	6								
21	0900.30	Valve spring	Molla valvola	6								
22	0604.05	Valve cage	Gabbia valvola	6								
23	1802.03	Hexagonal screw M8x18	Vite M8x18	8								
24	0500.61	Closed bearing housing	Flangia chiusa	→	1	1	1	0	1	1	0	1
25	0601.63	"O" Ring Ø1.78x60.05	"O" Ring Ø1.78x60.05	2	◆	◆	◆	◆	◆	◆	◆	◆
26	0200.06	Roller bearing 33205	Cuscinetto a rulli 33205	2								

Pos. Item	Codice Part Number	Description	Descrizione	Q.tà per ogni Pompa Q.ty for each Pump	NMT1220SRL	NMT1520SRL	NMT1220RL	NMT1520	NMT1520RL	NMT1820RL	NMT2120	NMT2120RL
27	0006.17	Single - ended shaft	Albero semplice P.d.F.	1	◆					◆		
	0006.19	" " "	" " "	1		◆						
	0006.14	" " "	" " "	1			◆					
	0006.16	" " "	" " "	1					◆			
	0006.18	" " "	" " "	1								◆
28	0007.41	Double - ended shaft	Albero doppia P.d.F.	1							◆	
	0007.42	" " "	" " "	1				◆				
29	0206.04	Crankshaft key	Chiavetta	→	1	1	1	2	1	1	2	1
30	1600.15	Oil dip stick	Tappo livello olio	1	◆	◆	◆	◆	◆	◆	◆	◆
31	0001.02	Crankshaft seal	Anello radiale	→	1	1	1	2	1	1	2	1
32	0301.02	Shim	Distanziale	1	◆	◆	◆	◆	◆	◆	◆	◆
33	0500.60	Bearing housing	Flangia	→	1	1	1	2	1	1	2	1
*34	0302.19	Plunger nut	Dado pistone	3								
*35	1400.12	Copper spacer Ø 11.2/15x0.5	Rosetta rame Ø 11.2/15x0.5	3								
*36	1200.10	Plunger 20mm	Pistone Ø20	3								
*37	1400.15	Copper spacer Ø 11.3/24x0.5	Rosetta rame Ø 11.3/24x0.5	3								
*38	0601.03	"O" Ring Ø1.78x7.66	"O" Ring Ø1.78x7.66	3								
*39	0009.04	Teflon ring	Anello antiestrusione	3								
*40	0003.28	Plunger rod	Asta pistone	3								
*41	0100.01	Connecting rod	Biella	3	◆	◆	◆	◆	◆	◆	◆	◆
*42	1502.06	Connecting rod pin	Spinotto	3								
*43	1401.02	Spring washer Ø6	Rosetta elastica Ø6	6								
*44	1801.32	Connecting rod screw M6x30	Vite M6x30	6								
45	0601.88	"O" Ring Ø 2.62x126.67	"O" Ring Ø 2.62x126.67	1								
46	0203.59	Crankcase cover	Coperchio posteriore	1								
47	0601.14	"O" Ring Ø1.78x14	"O" Ring Ø1.78x14	1								
48	0700.05	Sight glass, G3/4	Spia livello olio G3/4	1								
49	1801.12	Screw M6x16	Vite M6x16	4								
50	0205.03	Shaft protector	Cappello protez.	1				◆			◆	
51	1804.03	Shaft protector Screw	Vite Cappello	2								

Part available  
in kit only

**Particolare disponibile  
solo in kit**

\* Part available  
in kit also

**Particolare disponibile  
anche in kit**