

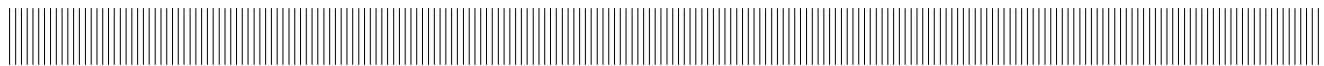


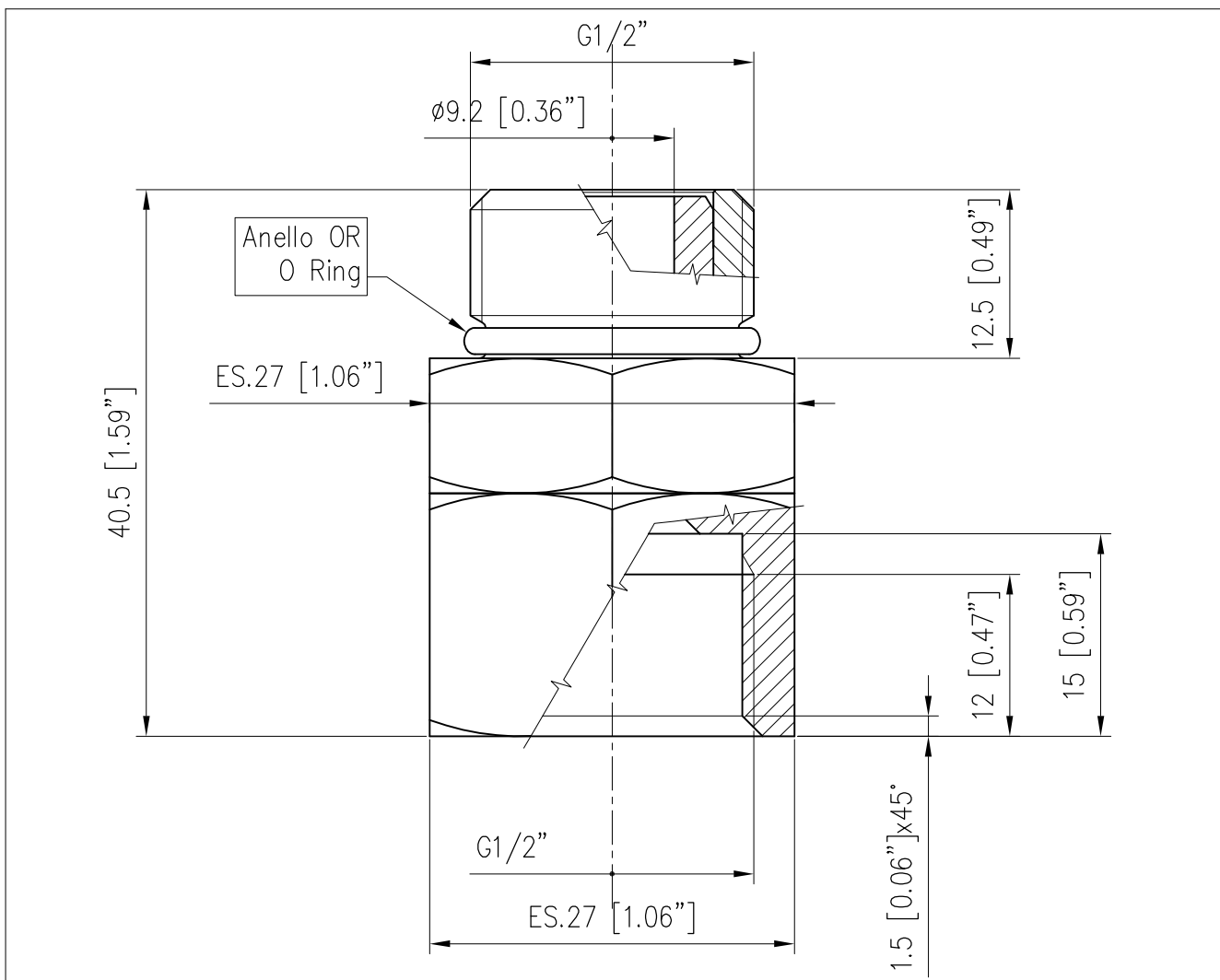
| | | | | |
|--|---|---|--|---|
|  | E Q U I P A G G I A M E N T I | 30.6480.00 GIUNTO GIREVOLE CON SFERE SW65 BALL SWIVEL G1/2 SW65 |  |  |
| | T E C N I C I L A V A G G I O | | | |



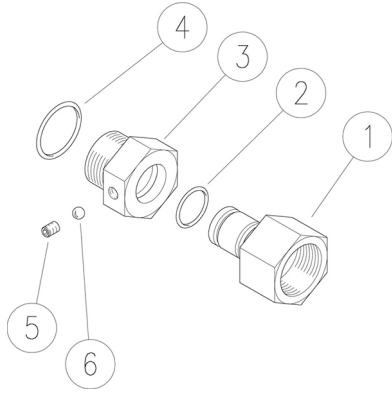
SPECIFICHE TECNICHE SPECIFICATIONS


| | |
|--|---|
| - PRESSIONE NOMINALE RATED PRESSURE | 24 bar – 2.4 MPa (350 psi) |
| - PORTATA MASSIMA MAX FLOW RATE | 100 l/min (26.5 USG p.m.) |
| - TEMPERATURA MASSIMA DI LAVORO (UTILIZZO CONTINUO) MAX WORKING TEMPERATURE (CONTINUOUS USE) | 90° C (194 °F) |
| - TEMPERATURA MASSIMA AMMESSA (SOLO PER BREVI PERIODI) MAX PERMISSIBLE TEMPERATURE (FOR SHORT PERIODS ONLY) | 100° C (212 °F) |
| - NUMERO DI GIRI MAX. MAX RPM | 30 |
| - COPPIA ALLA PRESSIONE NOMINALE TORQUE AT RATED PRESSURE | ~0.08 Nm (0.7 Lbs.in) |
| - MATERIALE MATERIAL | OTTONE BRASS |
| - GUARNIZIONI SEALS | OR IN FKM (VITON) E NBR (NITRILE) O-RING SEALS IN FKM (VITON) AND NBR (BUNA) |

MISURE D'INGOMBRO OVERALL DIMENSIONS

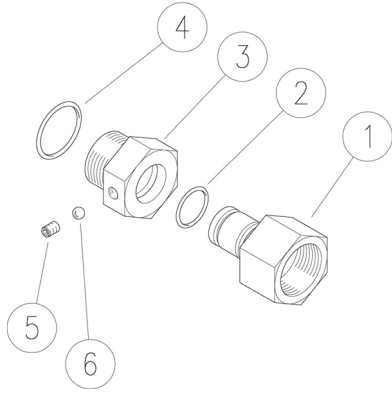



30.6480.00 Sw65 Giunto gir.a sfere,ott. G1/2 FM



| Pos. | Codice | Descrizione | Q.tà | K1 | K2 | K3 | K4 |  |
|------|-------------|---------------------------|------|----|----|----|----|---|
| 1 | 30.6482.31R | Racc. SW G1/2F ott. | 1 | | | | | 1 |
| 2 | 10.3059.10R | An.OR 1,78x11,11 mm Vi 70 | 1 | | | | | 10 |
| 3 | 30.6481.31R | Racc. SW G1/2M ott. | 1 | | | | | 1 |
| 4 | 10.3068.00R | An.OR 1,78x17,17 mm | 1 | | | | | 10 |
| 5 | 16.2100.51R | Grano DIN913 M4x4 mm inox | 1 | | | | | 10 |
| 6 | 14.7403.00R | Sfera 3 mm inox | 16 | | | | | 10 |

30.6480.00 Sw65 Swivel, ball-bearing, brass 1/2FM Bsp



| Pos. | P/N | Description | Q.ty | K1 | K2 | K3 | K4 |  |
|------|-------------|--------------------------------|------|----|----|----|----|---|
| 1 | 30.6482.31R | Coupl. -SW, 1/2F Bsp brass | 1 | | | | | 1 |
| 2 | 10.3059.10R | O-ring, 1,78x11,11 mm Vi 70 | 1 | | | | | 10 |
| 3 | 30.6481.31R | Coupl. -SW, 1/2M Bsp brass | 1 | | | | | 1 |
| 4 | 10.3068.00R | O-ring, 1,78x17,17 mm | 1 | | | | | 10 |
| 5 | 16.2100.51R | Set screw, DIN913 M4x4 mm Sst. | 1 | | | | | 10 |
| 6 | 14.7403.00R | Ball, 3 mm Sst. | 16 | | | | | 10 |